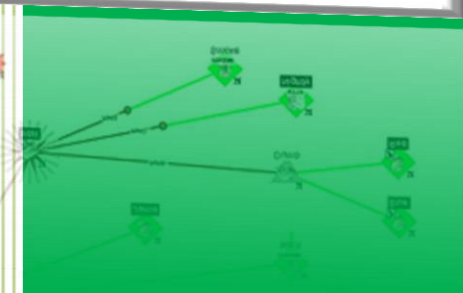
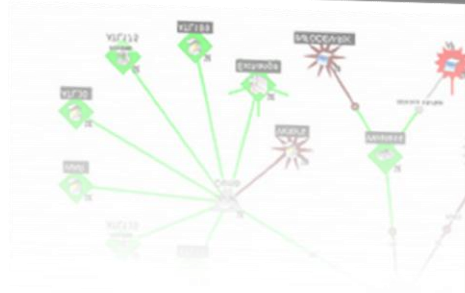
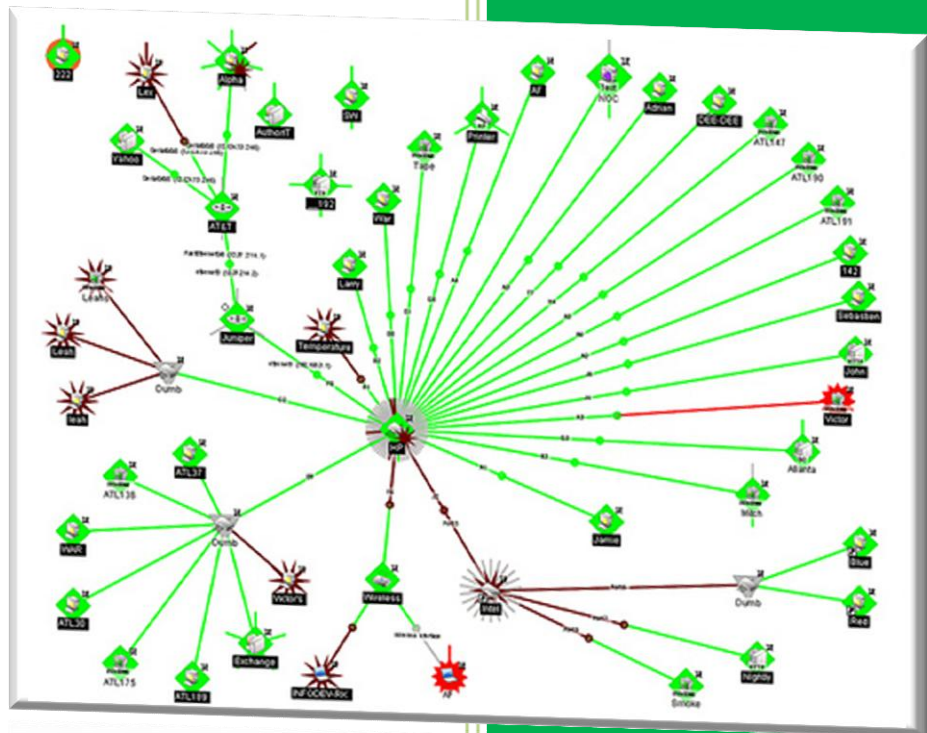


# HTTP Certificate Monitoring in WhatsUp Gold



## Introduction

We can find many solutions on the web to monitor Website SSL Certificate. From the server address, we can obtain informations about DNS resolution, Serial Number, expiration date ... However, this kind of website just offers SSL Certificate informations. There is little way to monitor or generate alerts on SSL Certificate.

WhatsUp Gold allows integrating HTTP Certificate Monitor in its console. We will explain, in this document, interests and advantages of this monitoring solution, and how implement thresholds and alerts on Certificates.


## SSL Certificate check

On the web, many websites allow obtaining SSL certificate informations. From the Server address, the site returns DNS resolution and lots informations on the certificate. In the following example, we will monitor the Ipswitch.webex website SSL certificate from one of this website:

**Server Address**

[Check Server](#)

- ✔ **DNS resolves 'ipswitch.webex.com' to 64.68.96.146**  
HTTP Server Header: Apache
- ✔ **SSL certificate**  
Common Name = \*.webex.com  
Issuer = VeriSign Class 3 Secure Server CA - G3  
Serial Number = 14590DB79E4A0CC9D73710E479F357AA  
SHA1 Thumbprint = F4EBC342659459DA5E7A9AE99745C954BDF9BF3A  
Key Length = 1024 bit  
Signature algorithm = SHA1+RSA (good)  
Secure Renegotiation: NOT supported
- ✔ **This certificate does not use a vulnerable Debian key (this is good)**
- ✔ **SSL Certificate expiration**  
The certificate expires June 21, 2012 (300 days from today)
- ✔ **Certificate Name matches ipswitch.webex.com**



Subject \*.webex.com  
Valid from 22/Jun/2011 to 21/Jun/2012  
Issuer VeriSign Class 3 Secure Server CA - G3

The HTTP Certificate Monitor on WhatsUp Gold doesn't provide as much information as this kind of website. However, it allows implementing alert thresholds, on the DNS resolution, expiration date, certificate usage, or connection.

### WhatsUp Gold HTTP Certificate Monitor

**SSL Configuration Dialog for HTTPCert Monitor**

Plug-In parameters

Name: Ipswitch Webex SSL Certificate

Description: Ipswitch Webex SSL Certificate

SSL certificate

URL: https://ipswitch.webex.com  
If URL is empty, IP address of the attached interface will be used

Check whether the URL is resolvable by DNS

Check certificate expiration  
Down if the certificate will be expired in the next 30 days

Check certificate usage

Down in case of connection error

Http options

Use proxy

Proxy: Port: 8080 Username: Password:

Timeout (seconds): 10

**SSL Certificates**

Log the result in Activity Logs

Save Debug Information into a File

Use In Discovery

OK Cancel Help

(C) 2010 Orsenna - License required - All rights reserved

**Test : Ipswitch Webex SSL Certificate**

Device for test: NPI610149

Network interface: (Use default network interface)

Credentials: (This Active Monitor does not require Credentials)

Details:

Building Sample data (RTT) =  
HTTPCert Monitor: Return code = 0 in 2125 ms

Test Close Help

## Local SSL certificate Monitoring

The WhatsUp Gold HTTP Certificate Monitor resolves an important problem compared with the SSL Certificate Monitoring websites: It allows monitoring local SSL certificate. Indeed, it's impossible to monitor, from the web, SSL certificates on your local network. However, it's realizable from your WhatsUp Gold console.

### Server Address

https://192.168.0.209:2381/

Check Server

**X Error: 192.168.0.209 is a private IP address.**

### Local SSL Monitoring in WhatsUp Gold

SSL Configuration Dialog for HTTPCert Monitor

Plug-In parameters

Name: My local SSL Certificate

Description: My local SSL Certificate

SSL certificate

URL: https://192.168.0.209:2381/

If URL is empty, IP address of the attached interface will be used

Check whether the URL is resolvable by DNS

Check certificate expiration

Down if the certificate will be expired in the next  days

Check certificate usage

Down in case of connection error

Http options

Use proxy

Proxy:  Port:  UserName:  Password:

Timeout (seconds):

**SSL Certificates**

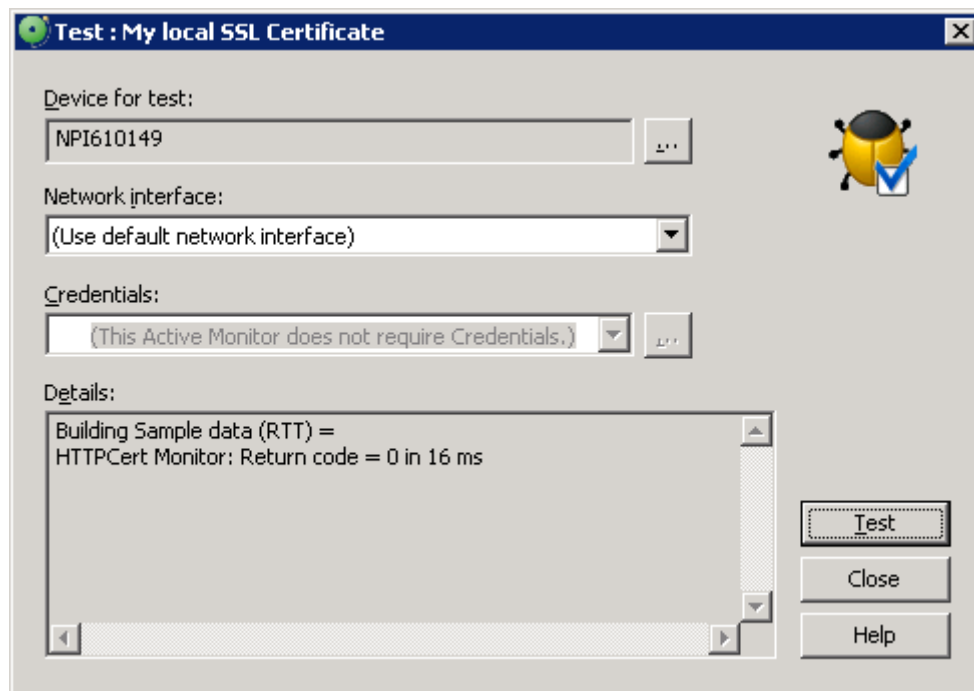
Log the result in Activity Logs

Save Debug Information into a File

Use In Discovery

OK Cancel Help

(C) 2010 Orsenna - License required - All rights reserved



In order to centralize monitoring informations in a single console, WhatsUp Gold allows integrating a tool to monitor your SSL Certificate. More, this Active Monitor will give you the possibility to check your local certificate. HTTP Certificate Monitor is available in the last version of WhatsUp Companion. You will find all informations on this plugin, in this address:

<http://www.orsenna.com/store/boutique.php>

---